

# 70M Bronto Travel Tower

## HT70M

### FEATURES#

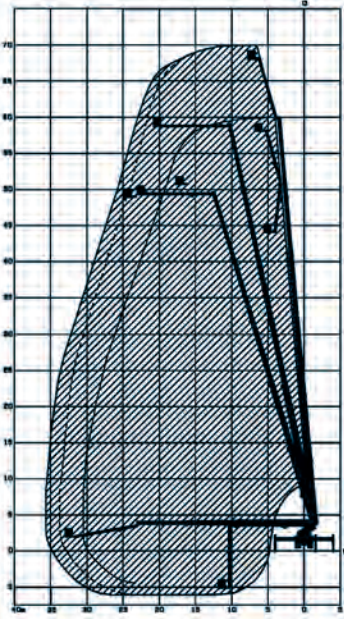
- Hydraulic tool outlet in basket
- 240vDC power to basket
- Ancillary fit out compliant with mine site safety requirements
- 8X8 wheel drive plus off-road capability
- In-built anemometer & alert
- Remote operation control
- Variable outrigger positioning system

### APPLICATIONS

- HV transmission tower dressing and line stringing
- Dragline and mining maintenance
- Wind farm maintenance
- Bridge and civil construction maintenance
- Telecommunications infrastructure



## RANGE CHART



# 70M BRONTO TRAVEL TOWER



Mine specification fit out<sup>#</sup>



In-built anemometer assesses windspeed



Independent radio remote control for flexibility in line of sight<sup>#</sup>

## SPECIFICATIONS

<b>Type</b>	Vehicle mounted elevating work platform
<b>Operating Height</b>	Basket floor height: 68.0 metres Working height: 70.0 metres
<b>Max Operating Reach</b>	Rated basket reach: 34.8 metres Working reach: 35.4 metres
<b>Max Working Depth</b>	Below ground level: 7.0 metres
<b>Max Working Radius</b>	Maximum working load 700kg: 29.5 metres Maximum working load 360kg: 33.0 metres Maximum working load 120kg: 34.8 metres
<b>Basket Dimensions</b>	Width: 2.4 metres Length: 1.1 metres
<b>Max Safe Work Load</b>	700 kilograms
<b>Unit Dimensions (Stowed)</b>	Travelling height: 4.2 metres Travelling width: 2.5 metres Travelling length: 12.3 metres Maximum weight: 36,000 kilograms
<b>Basket Rotation</b>	90 degrees
<b>Slewing</b>	360 degree continuous <sup>#</sup>
<b>Stabilisers</b>	4 x hydraulic operated, telescoping stabiliser legs with self-levelling feet Variable individual outrigger positioning system*
<b>Stabiliser Spread</b>	Full outrigger extension: 8.0 x 6.7 metres Minimum variable extension: 3.2 x 6.7 metres
<b>Prime Mover</b>	Scania
<b>Standard</b>	Built to AS1418.10 2011
<b>Windspeed Rating</b>	Operation permitted up to 12.5 metres per second

All details in this spec sheet are accurate as per the manufacturer's data at the time of printing. This literature is not a complete guide to product usage. Further information is available from your Boom Sherrin representative, tel: 136 132. Product specifications may change without notice.

\* Based on the required outrigger position and basket load, the 3+ Computer System automatically selects the maximum outreach in all directions. The computer then displays the current basket working position in graphical and numeric format.

<sup>#</sup> These features are available within the range but not necessarily on each unit. Please contact your Boom Sherrin representative for clarification.

For more information on how BOOM Sherrin can assist with your access requirements please contact our National Business Development Manager on 07 3868 6888 or speak to your nearest branch.

# 136 132